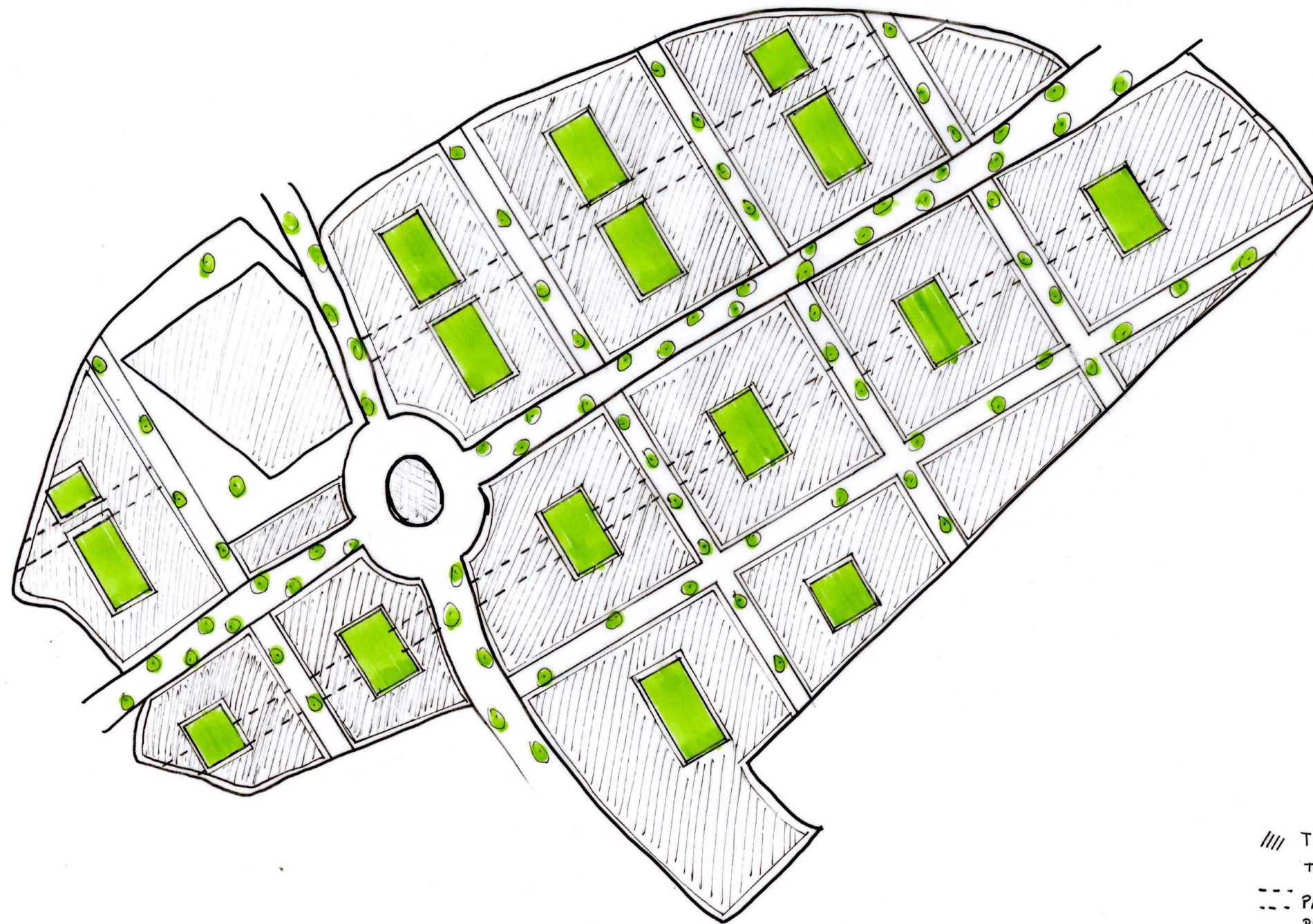




Studio I - Urban Design
2016/2017

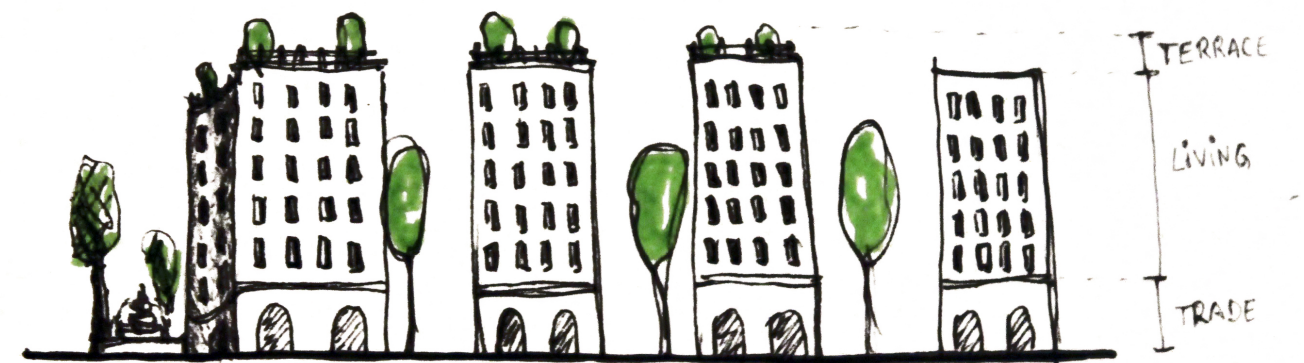
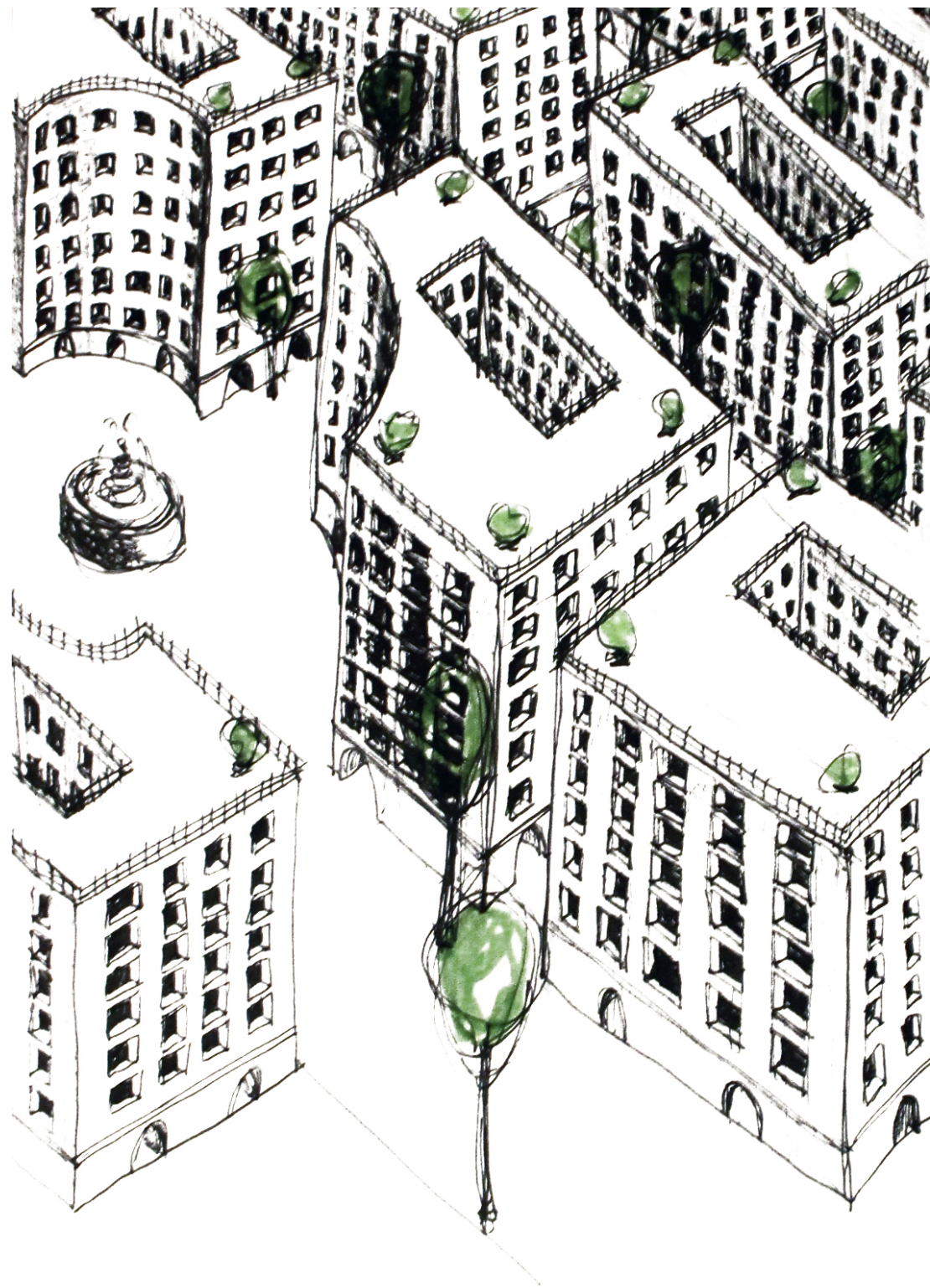
Historic Proposals to Functionalism, Modernism and Post-modernism Architecture

Teacher
Katarina Smatanova
Students
Bénédicte Quintiens
Inês Miranda
Noa Schumacher



- /// TERRACE'S FLOOR ON THE TOP OF BUILDING
- - - PASSAGES ON THE GROUND FLOOR BETWEEN TRADE AND GREEN SPACES
- GREEN SPACES

Functionalism

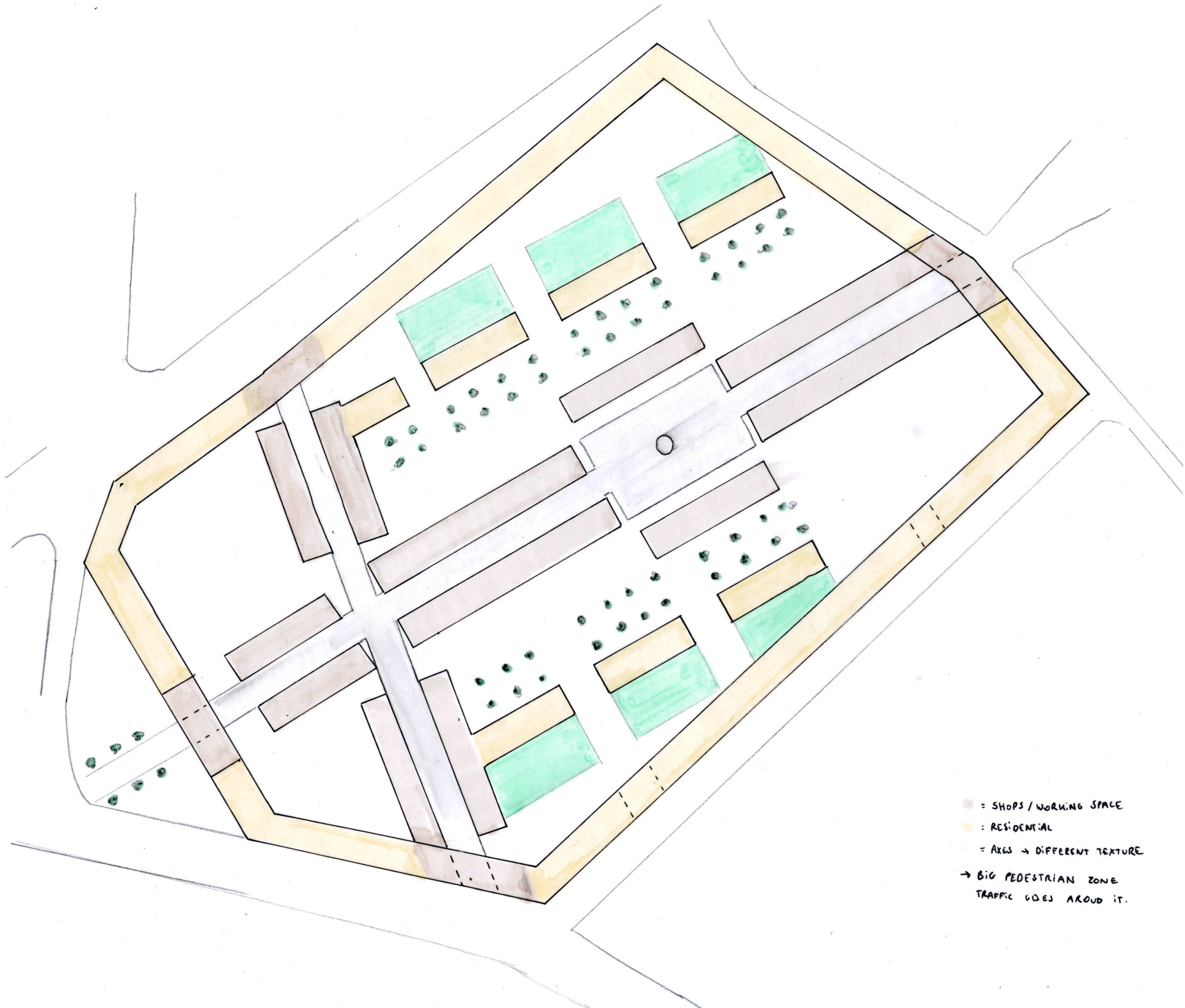


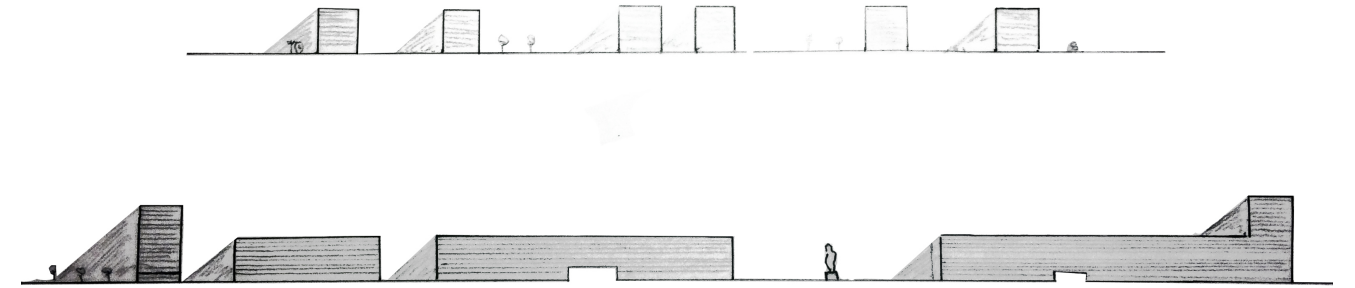
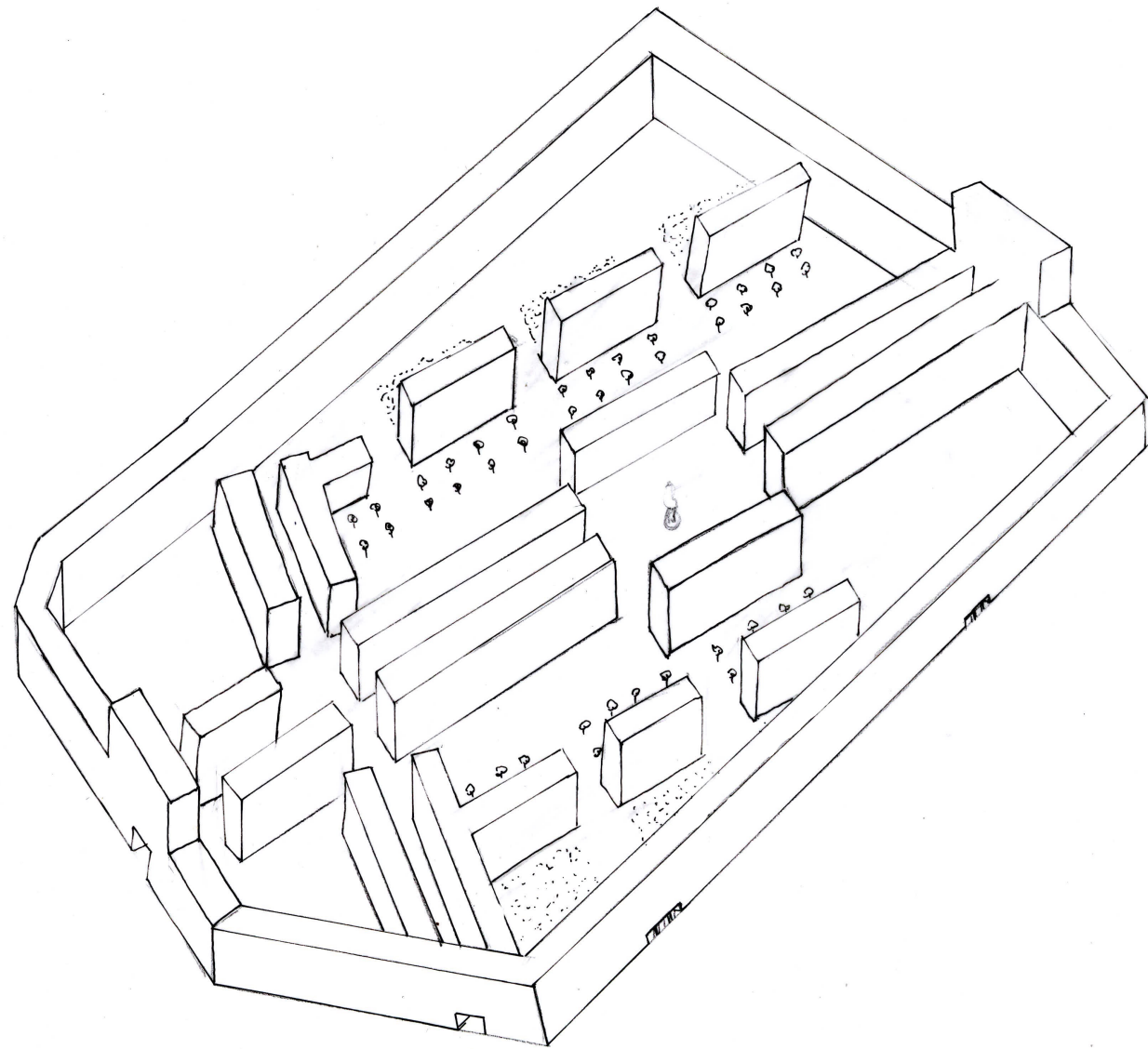
The idea is that everything exists for a function, and these functions are separated. On the ground floor we draw the trade, up is the living buildings and on the top of the building we have the terrace. This is very usual on functionalist architecture to emphasize the green spaces, the main square and the regular and straight streets and buildings. Everything is perpendicular and parallel, just simplicity, just what is necessary.

The terrace with empty spaces are green spaces on the trade level, the ground floor. So that, commercial has the possibility to open windows both outside and inside the blocks to give it more light, another important point on functionalism.

Every building has six floors, as usual on this style, because what is important is to give housing to people.

To facilitate the ventilation and the accesses, we draw passages on the groundfloor between trade and green spaces.

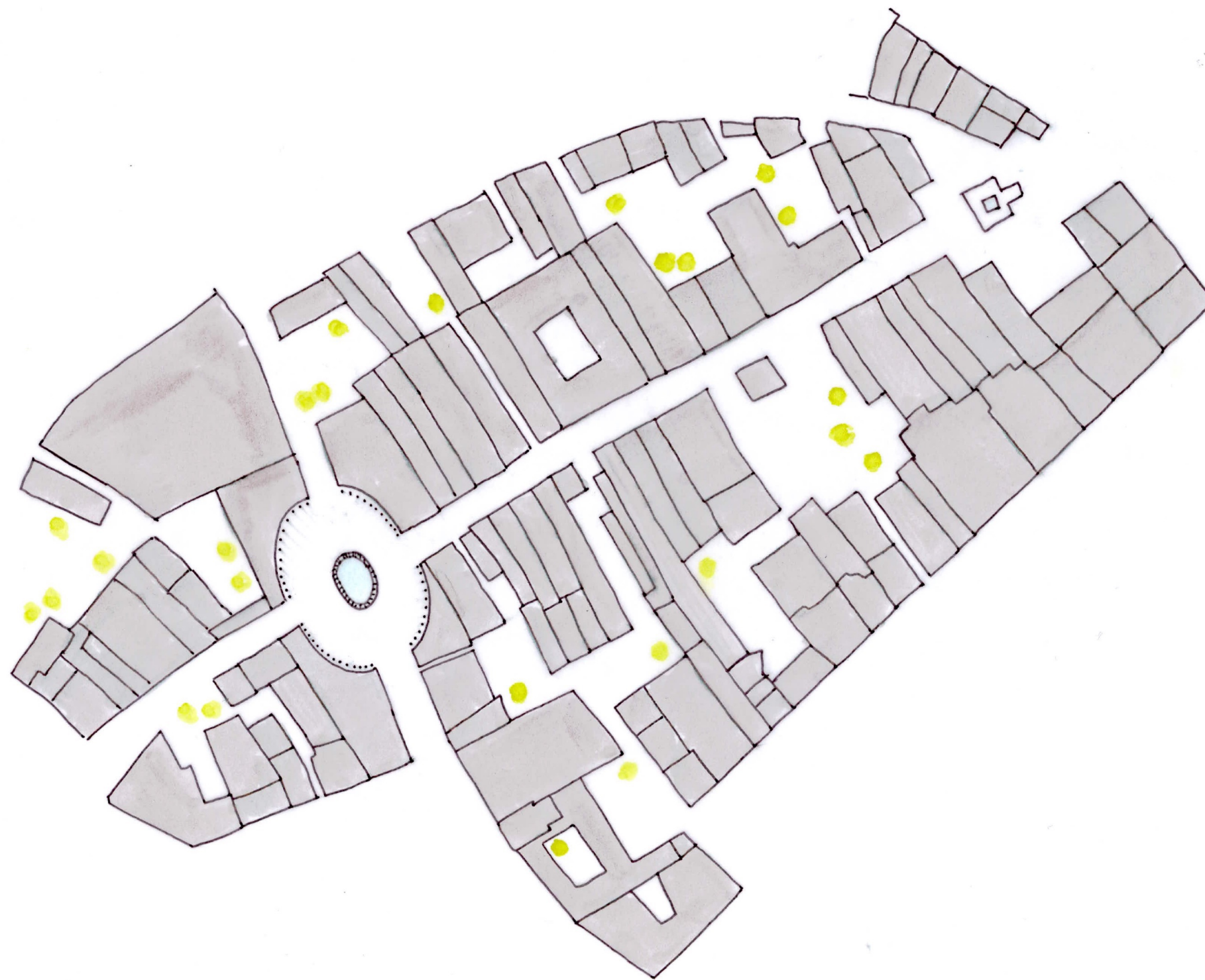




One of the main goals of modernism is to separate functions, that's why in the new design all the traffic goes around the neighborhood. A 'wall' of residential buildings points out this separation.

In the central zone of the area, the working and shopping buildings are located next to the main axes. This is because the neighborhood is in the centre of the city and this part is the 'machine' for the rest of the neighborhood and the street.

To strengthen the main ax, there are two big towers on the end of the street. This point is very usual on modernism, the big tower near the main square or the main street.





For the post modernism plan, we tried to create more places, squares and little streets, without removing all the existing part.

We added also some little monuments, statues and fountains, to make this street a more important and monumental scale.

The color is another important thing in that proposal, color and ornaments in buildings with large scale.

All the roofs are quite different and original, as usual in this architecture's style.

We changed the appearance of facades to answer at the idea of a return of the ornament, hierarchical composition, symmetry, and references to orders of architecture.

So, we tried to express the post modernism in diverse ways, starting with the important squares, the sculptural forms, the ornaments and also the colors.

